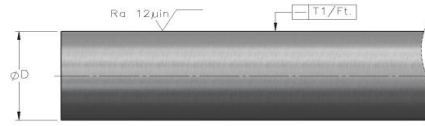
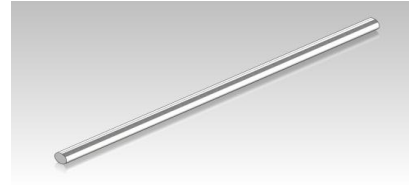


Precision Shaft

Type WRBZ

Style: Precision hardened and ground, stainless steel

Material: X46Cr13



Dia [in]	Type	Weight [lb/ft]	Length [in]	Tolerance class "L" [in]	Hardness Depth min [in]	Straightness T ₁ [in/ft]	Roundness [in]
1/4	WRBZ 4	0.17	236	.2495/.2490	0.016	0.0024	0.000157
3/8	WRBZ 6	0.38	236	.3745/.3740	0.016	0.0024	0.000157
1/2	WRBZ 8	0.66	236	.4995/.4990	0.024	0.0012	0.000197
5/8	WRBZ 10	1.04	236	.6245/.6240	0.024	0.0012	0.000197
3/4	WRBZ 12	1.50	236	.7495/.7490	0.035	0.0012	0.000236
1	WRBZ 16	2.66	236	.9995/.9990	0.035	0.0012	0.000236
1-1/4	WRBZ 20	4.17	236	1.2495/1.2490	0.059	0.0012	0.000276
1-1/2	WRBZ 24	6.00	236	1.4994/1.4989	0.059	0.0012	0.000276
2	WRBZ 32	10.67	236	1.9994/1.9987	0.059	0.0012	0.000276

Surface hardness: 50-55 HRC

Length tolerance: +500 / -100 mm

Special tolerances and diameters are available upon request

Custom machining per customer drawing